



**BÉTON  
PRÉFABRIQUÉ**  
du Québec

Béton Préfabriqué du Québec offers a range of precast concrete products. Precast concrete is a high-quality product manufactured under controlled conditions in a precast plant. Béton Préfabriqué du Québec precast concrete is compliant with Canadian Standards Association (CSA) requirements— a guarantee of a controlled production and a product of quality.

136 Comeau Blvd., Baie-Comeau QC G4Z 3A8

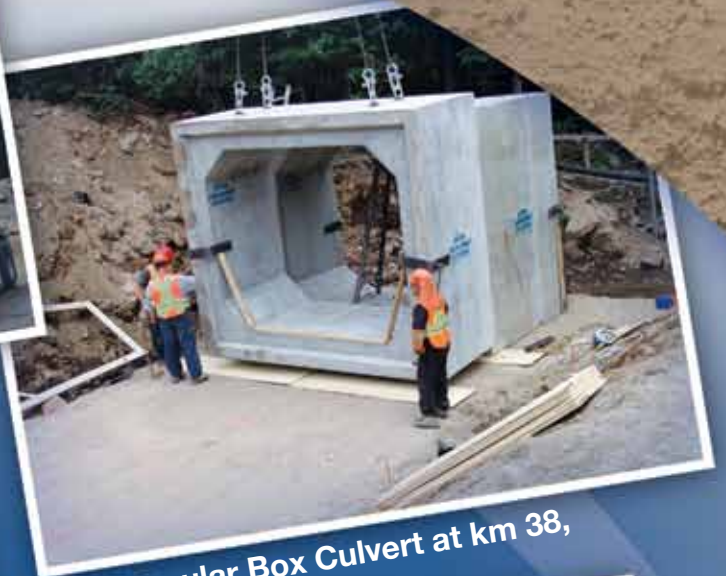
Telephone: **418 296-6635** • Fax: 418 296-1447

[www.betonprefabrique.ca](http://www.betonprefabrique.ca)

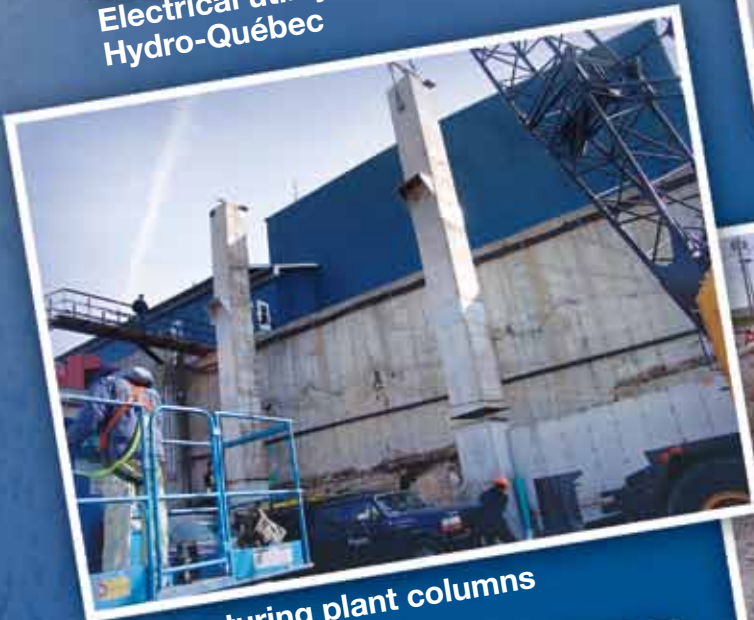




Electrical utility foundation for  
Hydro-Québec



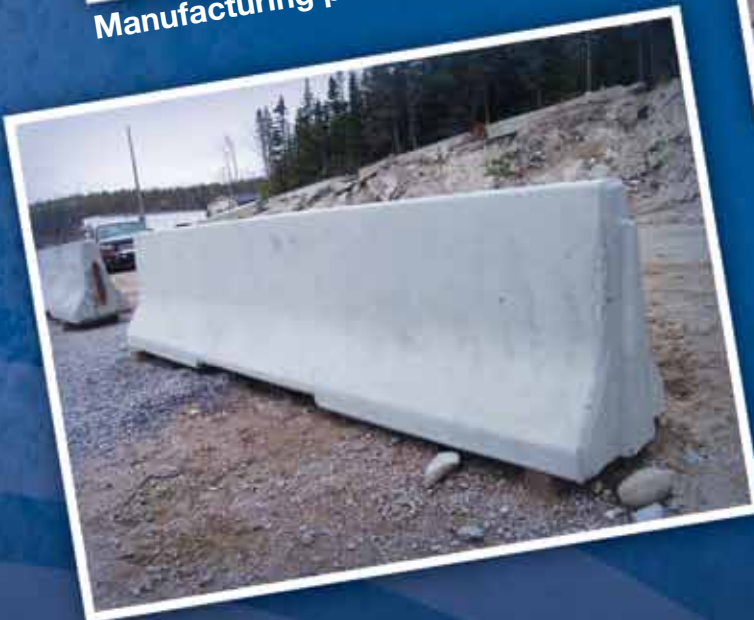
Rectangular Box Culvert at km 38,  
Route 389



Manufacturing plant columns



Decorative concrete wall



Jersey barriers

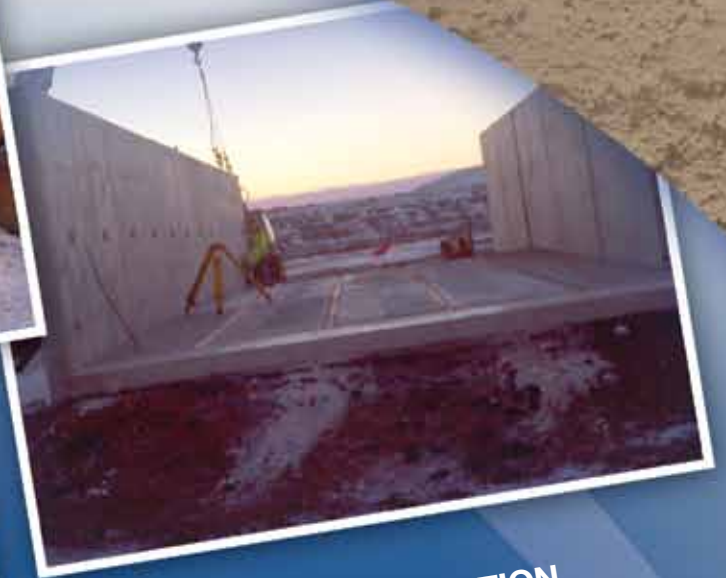


**PRECAST PUMPING STATION,  
WABUSH MINE, POINTE-NOIRE DIVISION,  
SEPT-ÎLES**



**PRECAST BRIDGE ABUTMENT  
AND SLABS, LA-ROMAINE 2**

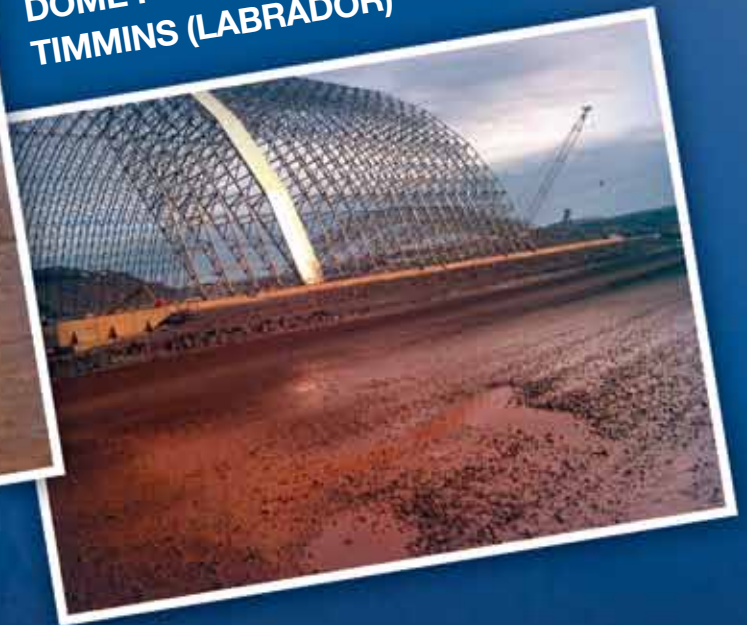
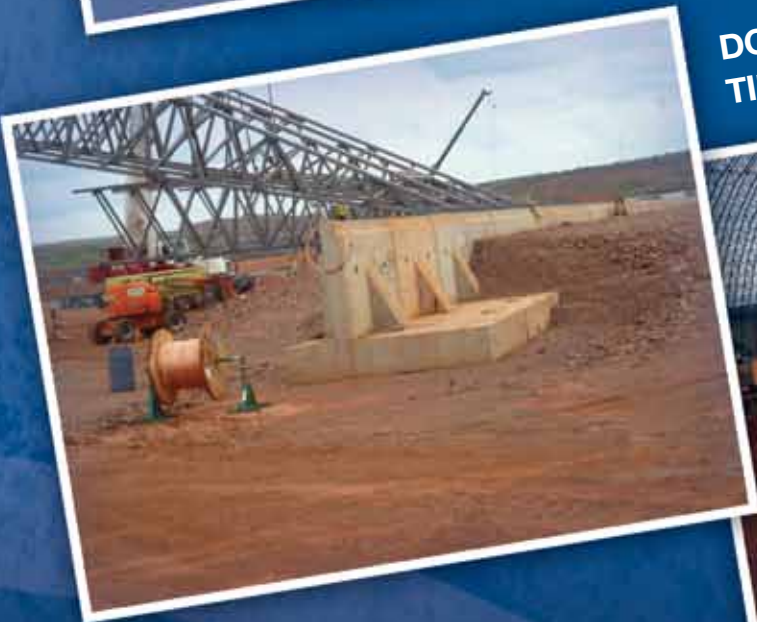




**STORAGE DOME FOUNDATION,  
SCHEFFERVILLE**



**DOME FOUNDATION,  
TIMMINS (LABRADOR)**





Foundations slabs, Alcoa dock,  
Baie-Comeau



Precast Sheet Piles component,  
Alcoa dock, Baie-Comeau



Settling basin at our Baie-Comeau plant



## QUALITY PRECAST CONCRETE

Whether you're looking for standard products or custom work, Béton Préfabriqué du Québec provides quality products and personalized service. Precast concrete offers many advantages and is an alternative to site casting.

Béton Préfabriqué du Québec is CSA A23.4 certified. This enables us to manufacture products to all those who require this standard as the Québec Ministry of Transport, Hydro-Québec and others. Béton Préfabriqué du Québec offers the following products and services:

- ◆ Streetlight bases
- ◆ Sign bases
- ◆ Jersey barriers
- ◆ Firewalls
- ◆ Slabs
- ◆ Bridge abutments and slabs
- ◆ Rectangular Box culvert
- ◆ Culvert ends
- ◆ Electrical utility foundations (Hydro-Québec)
- ◆ Dome foundations
- ◆ Building foundations
- ◆ Decorative blocks (2' x 2' x 4')
- ◆ Blocks with shear keys (3' x 3' x 6')
- ◆ Custom-made products
- ◆ Technical support
- ◆ Precast installation supervision services
- ◆ Custom precast concrete projects (up to 40 tons)

Visit us online at [www.betonprefabrique.ca](http://www.betonprefabrique.ca) and contact us with any questions or to tell us about your projects.

Think PRECAST CONCRETE right at the beginning of your future projects, we will help you in developing a concept.